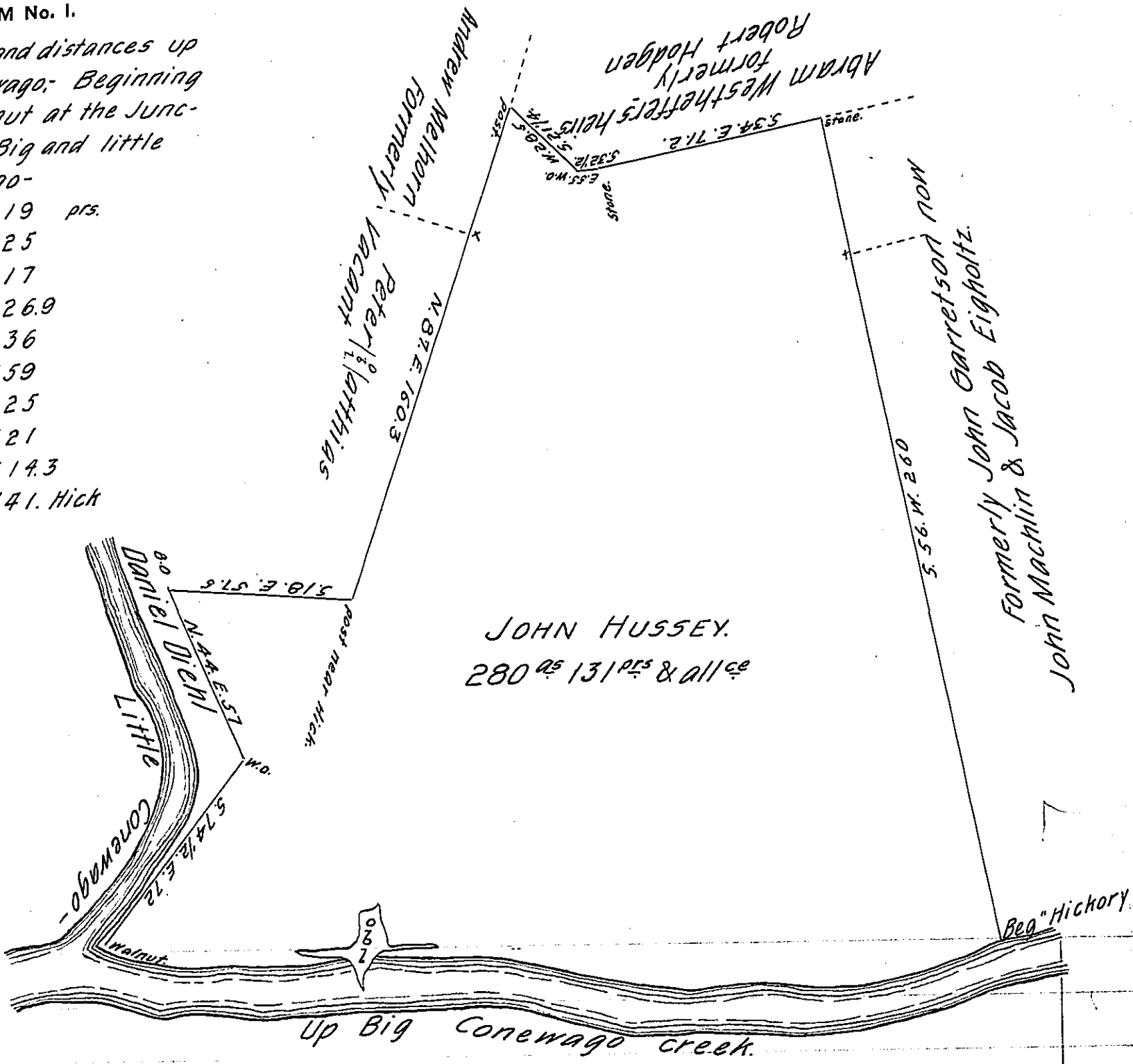


FORM No. 1.

Courses and distances up Big Conewago; Beginning at a Walnut at the Junction of Big and little Conewago-

- N 4 W 19 prs.
- N 19 W 25
- N 29 W 17
- N 25 W 26.9
- N 21 1/2 W 36
- N 12 W 59
- N 27 W 25
- N 16 W 21
- N 30 3/4 W 19.3
- N 38 W 41. Hick



Situate in Conewago (formerly Newbury) Township, York County, containing two hundred and eighty Acres, One hundred and thirty one perches and allowance of six per cent. Surveyed by Thomas Cookson, then D.S on the 16<sup>th</sup> day of March 1746 in pursuance of a Warrant granted to John Hussey for — acs dated ~~29<sup>th</sup> April 1745~~. Returned agreeably to the courses and distances, as found by a Survey of the different parts, and agreeably to the settled lines of the adjoining lands, March 13<sup>th</sup> 1823.

Jacob Kirk, Jr. D.S.

Samuel Cochran, Esq. S. G. }  
 † Say 20<sup>th</sup> March 1744.

IN TESTIMONY that the above is a copy of the original remaining on file in the Department of Internal Affairs of Pennsylvania, made conformably to an Act of Assembly approved the 16th day of February, 1833, I have hereunto set my Hand and caused the Seal of said Department to be affixed at Harrisburg, this sixth day of April 1905.

*James B. Brown*  
 Secretary of Internal Affairs.